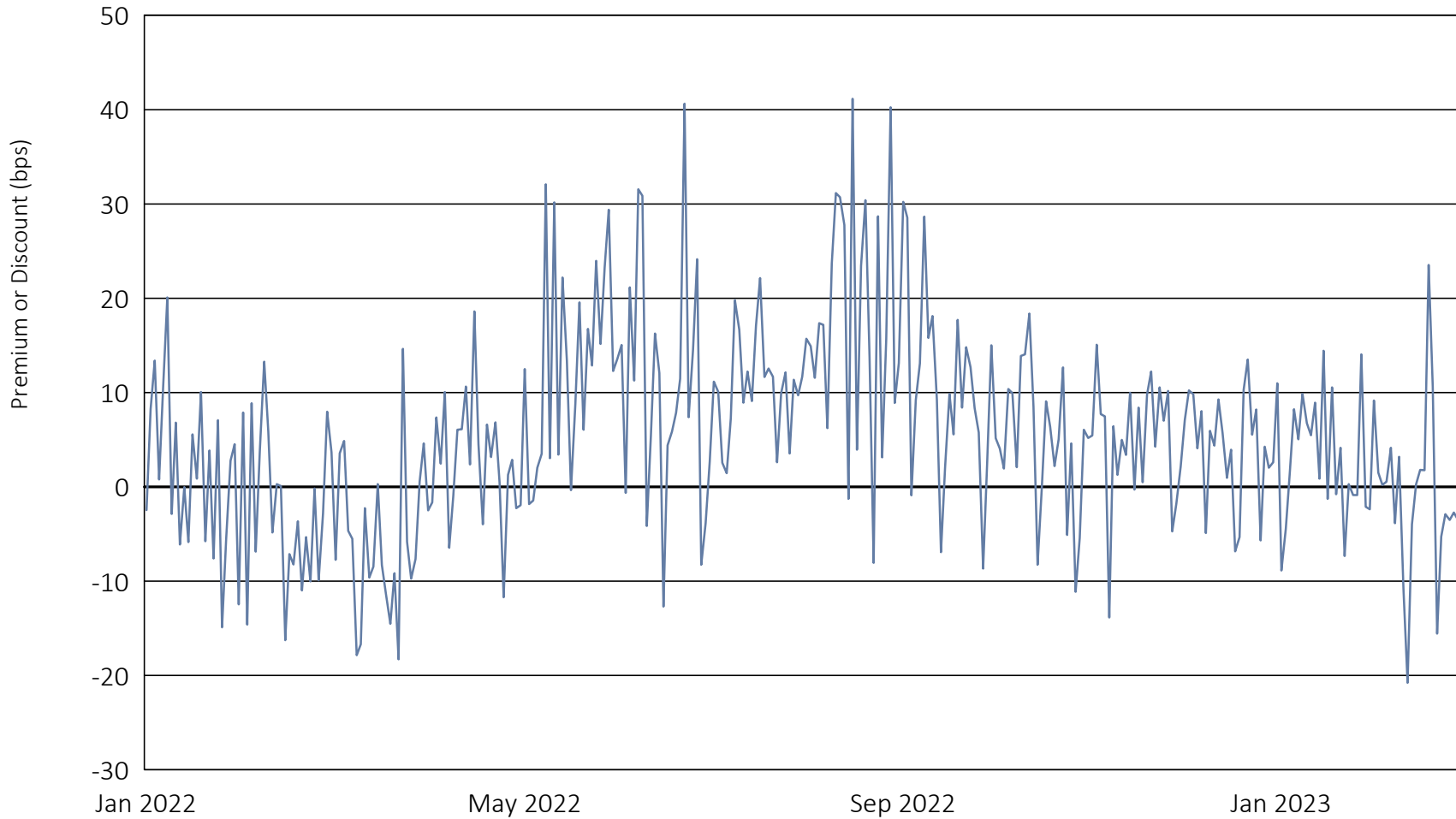


## 2ndVote Life Neutral Plus ETF

January 03, 2022 to March 31, 2023



	Calendar Year 2022	Calendar Year 2023 through March 31, 2023
Days traded at premium	183	39
Days traded at net asset value	0	0
Days traded at discount	68	23

*The following table and line graph are provided to show the frequency at which the closing price of the Fund was at a premium (above) or discount (below) to the Fund's daily net asset value ("NAV"). The table and line graph represent past performance and cannot be used to predict future results. Shareholders may pay more than NAV when buying Fund shares and receive less than NAV when those shares are sold because shares are bought and sold at current market prices.*